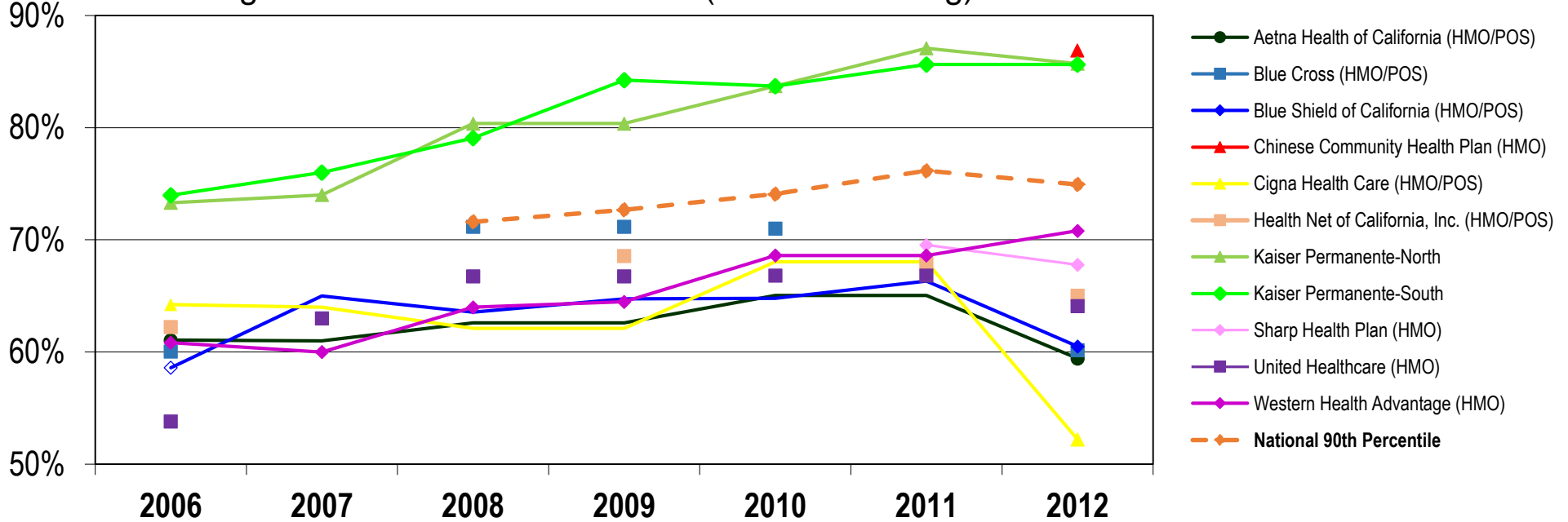


## Patients with High Blood Pressure Controlled (<140/90 mm Hg)



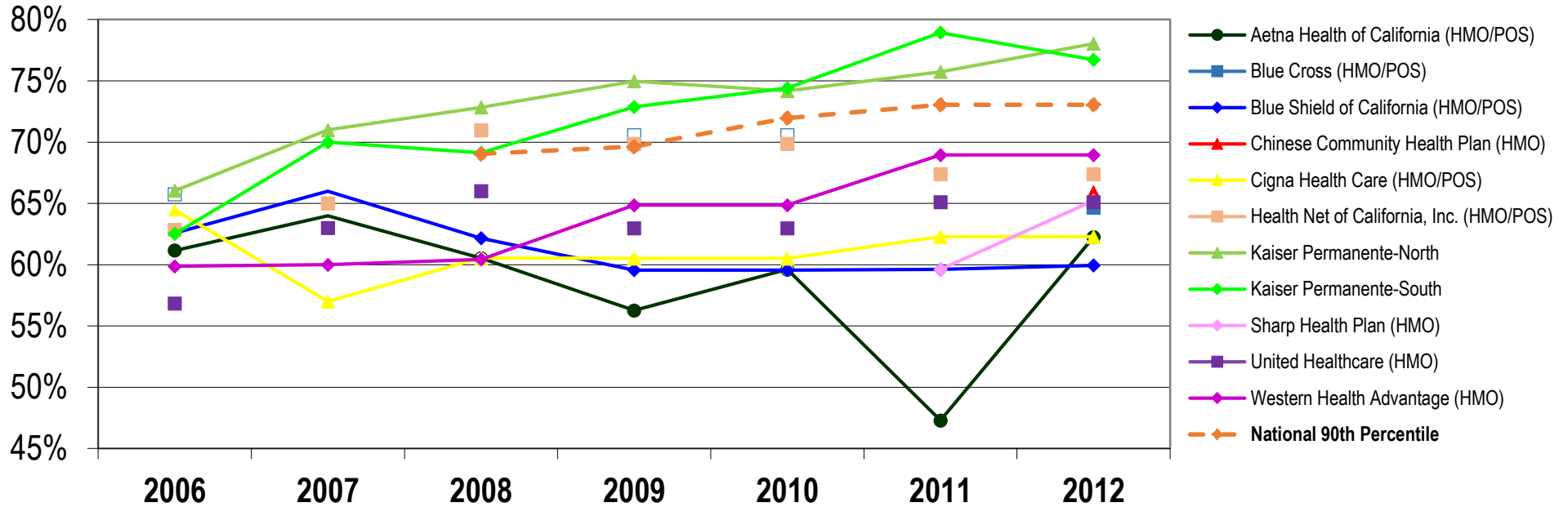
### Blood Pressure Controlled (<140/90) of Previously-Diagnosed Hypertensive Patients Among CA Health Plans

	2006	2007	2008	2009	2010	2011	2012	Change
Aetna Health of California (HMO/POS)	61.06%	61.00%	62.59%	62.59%	65.04%	65.04%	59.43%	-1.63%
Blue Cross (HMO/POS)	60.04%	61.00%	71.16%	71.16%	71.00%	63.02%	60.16%	0.12%
Blue Shield of California (HMO/POS)	58.60%	65.00%	63.55%	64.73%	64.79%	66.33%	60.50%	1.90%
Chinese Community Health Plan (HMO)							86.86%	NA
Cigna Health Care (HMO/POS)	64.23%	64.00%	62.11%	62.11%	68.04%	68.04%	52.22%	-12.01%
Health Net of California, Inc. (HMO/POS)	62.23%	62.00%	63.11%	68.56%	65.82%	67.93%	65.03%	2.80%
Kaiser Permanente-North (HMO)	73.31%	74.00%	80.37%	80.37%	83.70%	87.08%	85.71%	12.40%
Kaiser Permanente-South (HMO)	73.97%	76.00%	79.08%	84.23%	83.70%	85.64%	85.64%	11.67%
Sharp Health Plan (HMO)						69.54%	67.78%	NA
United Healthcare (HMO)	53.81%	63.00%	66.75%	66.75%	66.83%	66.83%	64.10%	10.29%
Western Health Advantage (HMO)	60.83%	60.00%	63.99%	64.48%	68.61%	68.61%	70.80%	9.97%
<b>National 90th Percentile</b>			<b>71.61%</b>	<b>72.68%</b>	<b>74.09%</b>	<b>76.16%</b>	<b>74.94%</b>	3.33%
<b>California Average</b>			<b>63.64%</b>	<b>69.44%</b>	<b>70.30%</b>	<b>70.81%</b>	<b>68.93%</b>	<b>5.29%</b>
<b>National Average</b>			63.37%	64.09%	63.43%	65.36%	63.04%	-0.33%

Data provided by NCQA Quality Compass. All dates refer to the performance year.

Trend analysis provided by the UC Berkeley School of Public Health Right Care research team, October 2013

## Heart Patients with Lipids Controlled (LDL-C<100)



### Lipid Control (LDL-C<100) of Heart Patients Among CA Health Plans

	2006	2007	2008	2009	2010	2011	2012	Change
Aetna Health of California (HMO/POS)	61.16%	64.00%	60.53%	56.27%	59.62%	47.30%	62.26%	1.10%
Blue Cross (HMO/POS)	65.74%	69.00%	69.00%	70.56%	70.56%	64.66%	64.66%	-1.08%
Blue Shield of California (HMO/POS)	62.58%	66.00%	62.16%	59.56%	59.56%	59.62%	59.95%	-2.63%
Chinese Community Health Plan (HMO)							65.91%	NA
Cigna Health Care (HMO/POS)	64.48%	57.00%	60.55%	60.51%	60.51%	62.28%	62.28%	-2.20%
Health Net of California, Inc. (HMO/POS)	62.84%	65.00%	70.98%	69.87%	69.87%	67.40%	67.40%	4.56%
Kaiser Permanente-North (HMO)	66.04%	71.00%	72.84%	74.97%	74.17%	75.74%	78.04%	12.00%
Kaiser Permanente-South (HM))	62.53%	70.00%	69.13%	72.87%	74.41%	78.94%	76.72%	14.19%
Sharp Health Plan (HMO)						59.62%	65.23%	NA
United Healthcare (HMO)	56.84%	63.00%	66.01%	62.98%	62.98%	65.11%	65.11%	8.27%
Western Health Advantage (HMO)	59.87%	60.00%	60.44%	64.86%	64.86%	68.95%	68.95%	9.08%
<b>National 90th Percentile</b>			<b>69.04%</b>	<b>69.63%</b>	<b>71.97%</b>	<b>73.06%</b>	<b>73.06%</b>	<b>4.02%</b>
<b>California Average</b>			<b>62.70%</b>	<b>65.83%</b>	<b>65.64%</b>	<b>64.96%</b>	<b>66.96%</b>	<b>4.26%</b>
<b>National Average</b>			59.72%	59.16%	59.89%	59.84%	59.87%	0.15%

Data provided by NCQA Quality Compass. All dates refer to the performance year.

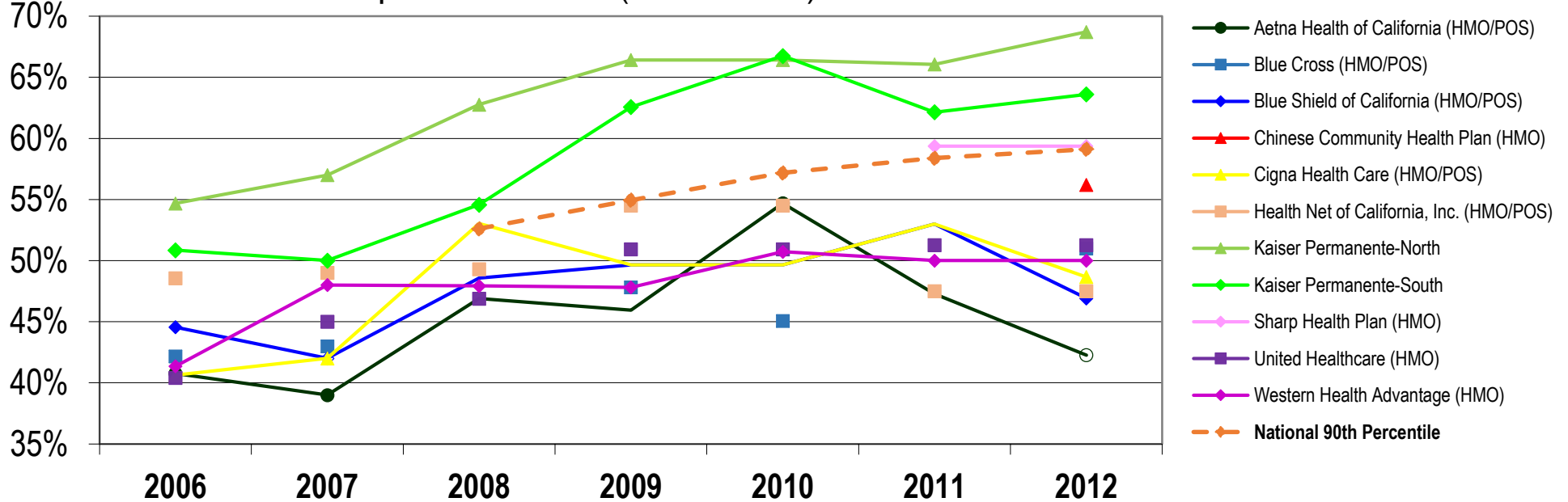
Trend analysis provided by the UC Berkeley School of Public Health Right Care research team, October 2013

## Right Care Initiative: Key Quality Indicators for Cardiovascular Prevention Among California Health Plans

Trend analysis provided by the UC Berkeley School of Public Health Right Care research team, October 2013



### Diabetic Patients with Lipids Controlled (LDL-C<100)



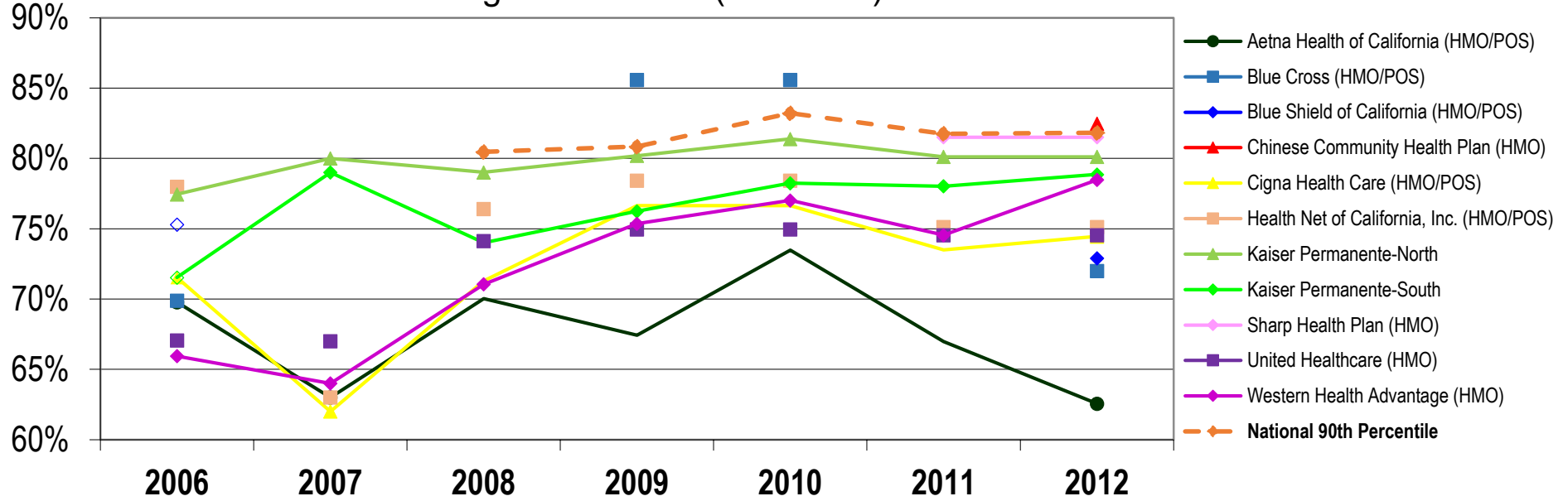
### Lipid Control (LDL-C<100) of Diabetic Patients Among CA Health Plans

	2006	2007	2008	2009	2010	2011	2012	Change
Aetna Health of California (HMO/POS)	40.77%	39.00%	46.89%	45.95%	54.69%	47.27%	42.27%	1.50%
Blue Cross (HMO/POS)	42.17%	43.00%	53.86%	47.81%	45.07%	51.00%	51.00%	8.83%
Blue Shield of California (HMO/POS)	44.55%	42.00%	48.58%	49.64%	49.64%	52.99%	46.91%	2.36%
Chinese Community Health Plan (HMO)							56.20%	NA
Cigna Health Care (HMO/POS)	40.63%	42.00%	53.04%	49.64%	49.64%	53.00%	48.66%	8.03%
Health Net of California, Inc. (HMO/POS)	48.56%	49.00%	49.30%	54.50%	54.50%	47.51%	47.51%	-1.05%
Kaiser Permanente-North (HMO)	54.68%	57.00%	62.77%	66.42%	66.42%	66.06%	68.72%	14.04%
Kaiser Permanente-South (HMO)	50.85%	50.00%	54.58%	62.57%	66.75%	62.14%	63.61%	12.76%
Sharp Health Plan (HMO)						59.37%	59.37%	NA
United Healthcare (HMO)	40.42%	45.00%	46.88%	50.94%	50.94%	51.26%	51.26%	10.84%
Western Health Advantage (HMO)	41.36%	48.00%	47.93%	47.81%	50.73%	50.00%	50.00%	8.64%
<b>National 90th Percentile</b>			<b>52.61%</b>	<b>54.95%</b>	<b>57.18%</b>	<b>58.39%</b>	<b>59.12%</b>	<b>6.51%</b>
<b>California Average</b>			<b>48.33%</b>	<b>52.81%</b>	<b>53.82%</b>	<b>54.06%</b>	<b>53.68%</b>	<b>5.35%</b>
<b>National Average</b>			45.52%	47.04%	47.73%	48.08%	48.42%	2.90%

Data provided by NCQA Quality Compass. All dates refer to the performance year.

Trend analysis provided by the UC Berkeley School of Public Health Right Care research team, October 2013

## Diabetic Patients with Blood Sugar Controlled (HbA1c<9)



Blood Sugar HbA1c<9 of Diabetic Patients Among CA Health Plans								
	2006	2007	2008	2009	2010	2011	2012	Change
Aetna Health of California (HMO/POS)	69.78%	63.00%	70.02%	67.43%	73.47%	66.98%	62.56%	-7.22%
Blue Cross (HMO/POS)	69.88%	71.00%	75.50%	85.58%	85.58%	72.00%	72.00%	2.12%
Blue Shield of California (HMO/POS)	75.30%	64.00%	71.56%	75.91%	75.91%	73.68%	72.91%	-2.39%
Chinese Community Health Plan (HMO)							82.48%	NA
Cigna Health Care (HMO/POS)	71.53%	62.00%	71.29%	76.64%	76.64%	73.50%	74.45%	2.92%
Health Net of California, Inc. (HMO/POS)	77.99%	63.00%	76.40%	78.42%	78.42%	75.13%	75.13%	-2.86%
Kaiser Permanente-North (HMO)	77.45%	80.00%	79.01%	80.19%	81.39%	80.11%	80.11%	2.66%
Kaiser Permanente-South (HMO)	71.53%	79.00%	74.01%	76.24%	78.24%	78.02%	78.86%	7.33%
Sharp Health Plan (HMO)						81.51%	81.51%	NA
United Healthcare (HMO)	67.06%	67.00%	74.13%	74.96%	74.96%	74.55%	74.55%	7.49%
Western Health Advantage (HMO)	65.94%	64.00%	71.05%	75.36%	77.01%	74.55%	78.47%	12.53%
<b>National 90th Percentile</b>			<b>80.46%</b>	<b>80.84%</b>	<b>83.21%</b>	<b>81.75%</b>	<b>81.82%</b>	1.36%
<b>California Average</b>			<b>71.34%</b>	<b>76.75%</b>	<b>77.95%</b>	<b>72.26%</b>	<b>75.73%</b>	<b>4.39%</b>
<b>National Average</b>			71.64%	71.79%	72.68%	71.11%	71.53%	-0.11%

Data provided by NCQA Quality Compass. All dates refer to the performance year.  
Trend analysis provided by the UC Berkeley School of Public Health Right Care research team, October 2013